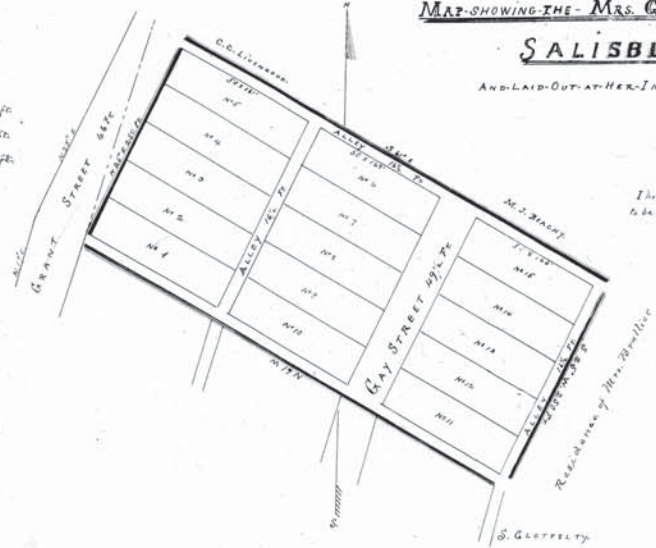


MAP SHOWING THE - MRS. G. W. BRALLIER - ADDITION of 15 Lots, To  
**SALISBURY BOROUGH.**

AND LAID OUT AT HER INSTANCE - AUGUST 16<sup>th</sup> 1892.

J. N. Davis.

- 1<sup>st</sup> Lots AND BY THE DEEDS CONTAIN THE SURFACE OF 2025 SQ. FT.
- 2<sup>nd</sup> Lots ARE BY THE DEEDS CONTAIN THE SURFACE OF 1841 SQ. FT.
- 3<sup>rd</sup> Lots ARE BY THE DEEDS CONTAIN THE SURFACE OF 1270 SQ. FT.



I hereby accept the within drafted survey of 15 lots Street, and agree to be my addition to Salisbury Borough.  
 Sarah Brallier

Recorded 2<sup>o</sup> October 1892.

J. S. Hileman  
 Recorder

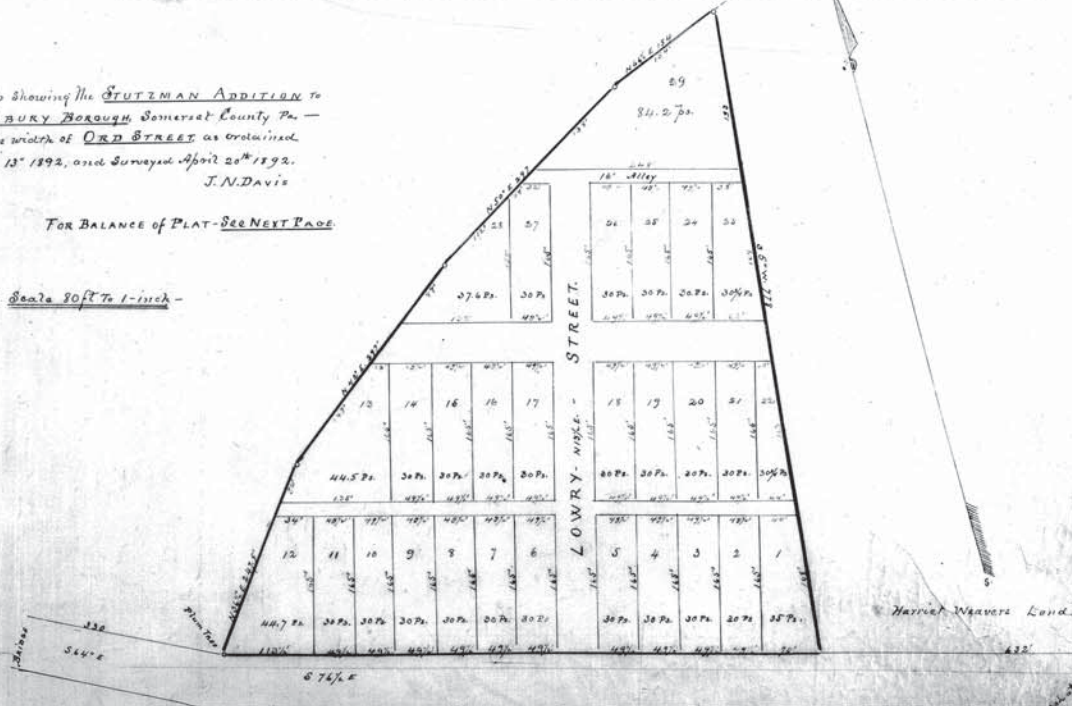
- See Vol. 81 page 224 -

**Stutzman ADDITION TO Salisbury Borough.**

Map showing the STUTZMAN ADDITION to  
 SALISBURY BOROUGH, Somerset County Pa. -  
 Also the width of ORD STREET as obtained  
 April 13<sup>th</sup> 1892, and Surveyed April 20<sup>th</sup> 1892.  
 J. N. Davis

FOR BALANCE OF PLAT - SEE NEXT PAGE

- Scale 80 ft To 1 inch -



Harriet Weaver Land

Draft Continued on next page